

Chemokine Receptor D6 Polyclonal Antibody
Catalog # AP69079**Specification****Chemokine Receptor D6 Polyclonal Antibody - Product Information**

Application	WB, IHC-P, IF
Primary Accession	O00590
Reactivity	Human
Host	Rabbit
Clonality	Polyclonal

Chemokine Receptor D6 Polyclonal Antibody - Additional Information**Gene ID** 1238**Other Names**

CCBP2; CCR10; CMKBR9; Chemokine-binding protein 2; C-C chemokine receptor D6; Chemokine receptor CCR-10; Chemokine receptor CCR-9; Chemokine-binding protein D6

Dilution

WB~~Western Blot: 1/500 - 1/2000. Immunohistochemistry: 1/100 - 1/300. Immunofluorescence: 1/200 - 1/1000. ELISA: 1/10000. Not yet tested in other applications.

IHC-P~~N/A

IF~~1:50~200

Format

Liquid in PBS containing 50% glycerol, 0.5% BSA and 0.09% (W/V) sodium azide.

Storage Conditions

-20°C

Chemokine Receptor D6 Polyclonal Antibody - Protein Information**Name** ACKR2**Synonyms** CCBP2, CCR10, CMKBR9, D6**Function**

Atypical chemokine receptor that controls chemokine levels and localization via high-affinity chemokine binding that is uncoupled from classic ligand-driven signal transduction cascades, resulting instead in chemokine sequestration, degradation, or transcytosis (PubMed: [18201974](http://www.uniprot.org/citations/18201974), PubMed: [20373092](http://www.uniprot.org/citations/20373092), PubMed: [23479571](http://www.uniprot.org/citations/23479571)). Also known as interceptor (internalizing receptor) or chemokine-scavenging receptor or chemokine decoy receptor (PubMed: [18201974](http://www.uniprot.org/citations/18201974), PubMed: [20373092](http://www.uniprot.org/citations/20373092), PubMed: [23479571](http://www.uniprot.org/citations/23479571)).

target="_blank">23479571). Acts as a receptor for chemokines including CCL2, CCL3, CCL3L1, CCL4, CCL5, CCL7, CCL8, CCL11, CCL13, CCL17, CCL22, CCL23, CCL24, SCYA2/MCP-1, SCY3/MIP-1-alpha, SCYA5/RANTES and SCYA7/MCP-3 (PubMed:18201974, PubMed:20373092, PubMed:23479571). Upon active ligand stimulation, activates a beta-arrestin 1 (ARRB1)- dependent, G protein-independent signaling pathway that results in the phosphorylation of the actin-binding protein cofilin (CFL1) through a RAC1-PAK1-LIMK1 signaling pathway (PubMed:23633677). Activation of this pathway results in up-regulation of ACKR2 from endosomal compartment to cell membrane, increasing its efficiency in chemokine uptake and degradation (PubMed:23633677). By scavenging chemokines in tissues, on the surfaces of lymphatic vessels, and in placenta, plays an essential role in the resolution (termination) of the inflammatory response and in the regulation of adaptive immune responses (PubMed:23479571). Plays a major role in the immune silencing of macrophages during the resolution of inflammation (By similarity). Acts as a regulator of inflammatory leukocyte interactions with lymphatic endothelial cells (LECs) and is required for immature/mature dendritic cells discrimination by LECs (PubMed:23479571).

Cellular Location

Early endosome. Recycling endosome. Cell membrane; Multi-pass membrane protein.
Note=Predominantly localizes to endocytic vesicles, and upon stimulation by the ligand is internalized via clathrin-coated pits (PubMed:18201974). Once internalized, the ligand dissociates from the receptor, and is targeted to degradation while the receptor is recycled back to the cell membrane (PubMed:18201974).

Tissue Location

Found in endothelial cells lining afferent lymphatics in dermis and lymph nodes. Also found in lymph nodes subcapsular and medullary sinuses, tonsillar lymphatic sinuses and lymphatics in mucosa and submucosa of small and large intestine and appendix. Also found in some malignant vascular tumors. Expressed at high levels in Kaposi sarcoma-related pathologies. Expressed on apoptotic neutrophils (at protein level). Expressed primarily in placenta and fetal liver, and found at very low levels in the lung and lymph node.

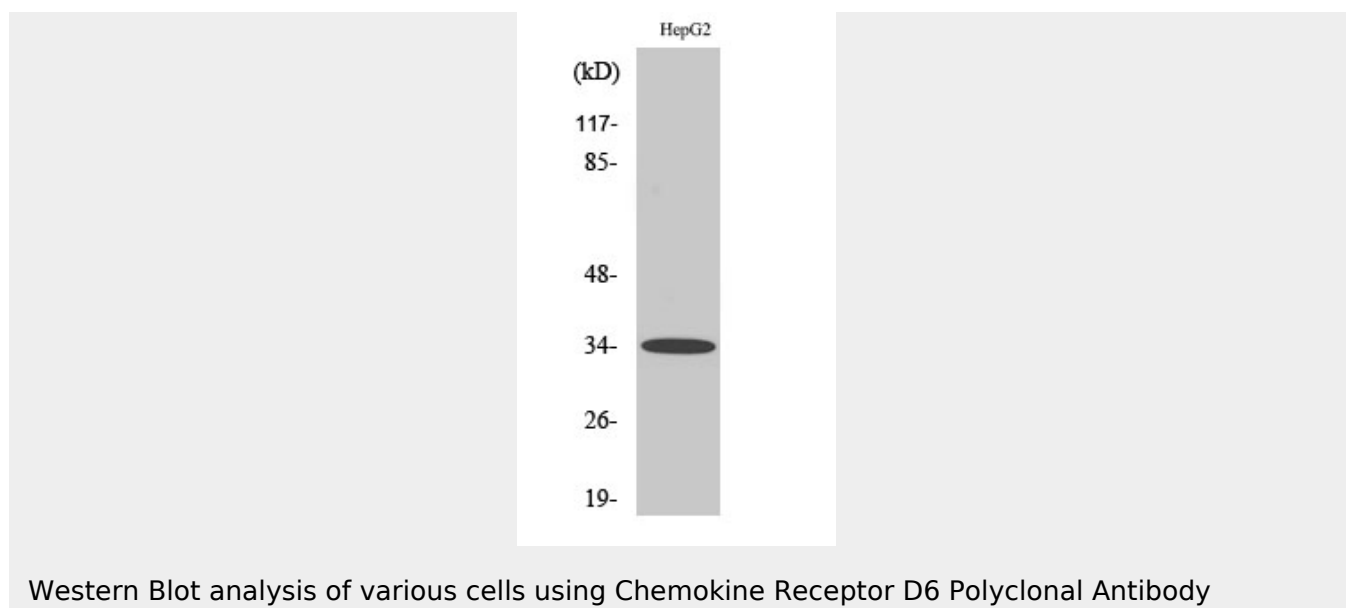
Chemokine Receptor D6 Polyclonal Antibody - Protocols

Provided below are standard protocols that you may find useful for product applications.

- [Western Blot](#)
- [Blocking Peptides](#)
- [Dot Blot](#)
- [Immunohistochemistry](#)
- [Immunofluorescence](#)
- [Immunoprecipitation](#)
- [Flow Cytometry](#)
- [Cell Culture](#)

Chemokine Receptor D6 Polyclonal Antibody - Images





Chemokine Receptor D6 Polyclonal Antibody - Background

Atypical chemokine receptor that controls chemokine levels and localization via high-affinity chemokine binding that is uncoupled from classic ligand-driven signal transduction cascades, resulting instead in chemokine sequestration, degradation, or transcytosis. Also known as interceptor (internalizing receptor) or chemokine-scavenging receptor or chemokine decoy receptor. Acts as a receptor for chemokines including CCL2, CCL3, CCL3L1, CCL4, CCL5, CCL7, CCL8, CCL11, CCL13, CCL17, CCL22, CCL23, CCL24, SCYA2/MCP-1, SCY3/MIP-1-alpha, SCYA5/RANTES and SCYA7/MCP-3. Upon active ligand stimulation, activates a beta-arrestin 1 (ARRB1)-dependent, G protein- independent signaling pathway that results in the phosphorylation of the actin-binding protein cofilin (CFL1) through a RAC1-PAK1- LIMK1 signaling pathway. Activation of this pathway results in up- regulation of ACKR2 from endosomal compartment to cell membrane, increasing its efficiency in chemokine uptake and degradation. By scavenging chemokines in tissues, on the surfaces of lymphatic vessels, and in placenta, plays an essential role in the resolution (termination) of the inflammatory response and in the regulation of adaptive immune responses. Plays a major role in the immune silencing of macrophages during the resolution of inflammation. Acts as a regulator of inflammatory leukocyte interactions with lymphatic endothelial cells (LECs) and is required for immature/mature dendritic cells discrimination by LECs.